

- ▶ Home
- ▶ Products
- ▶ Services
- ▶ Rebates & Tips
- ▶ About Us
- ▶ Testimonials
- ▶ Contact Us

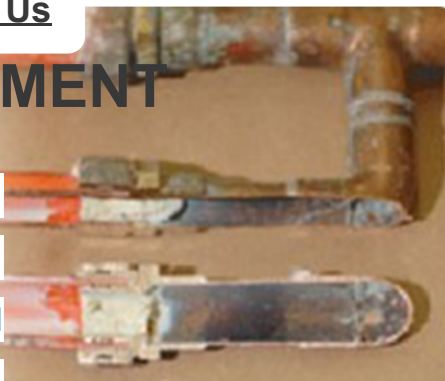
KITEC REPLACEMENT

Kitec Replacement Experts

Hydronic Heating

Licensed, Bonded & Insured

Financing Available



Request Service



Get Service

Coupons

Heating

Air Conditioning

Gas Fireplace Inserts

Windows

Doors

Siding

Gutters

Water Heaters

Generators

Thermostats

Filters & Air Purifiers

Safety Accessories

Insulation

Services

24-Hr. Emergency Service

Furnace Service & Repair

Guardian Maintenance

Air Duct Cleaning

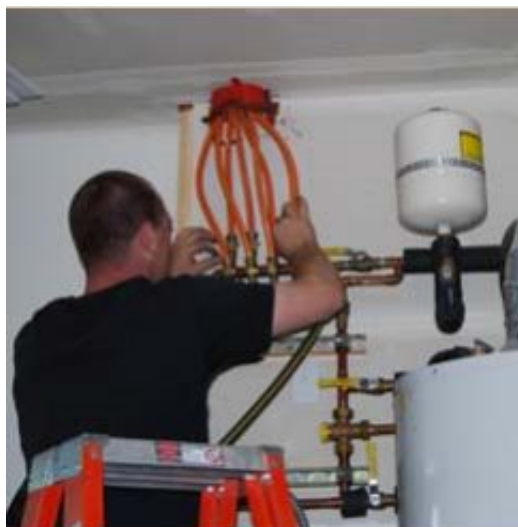
Generator Maintenance

Plumbing

KITEC PLUMBING REPLACEMENT

WHAT YOU SHOULD KNOW

Over the last 10-15 years when many green homes were built in the Seattle area, residences were plumbed with hydronic forced-air systems for heating. For example, you can find this type of heating in the beautiful neighborhood of [Issaquah Highlands](#) plus many other modern homes in Seattle, Everett and the Eastside. Hydronic heating is a great idea, however homeowners have discovered some disturbing news about some of the piping that was used to plumb the heating systems. (Not systems done by Washington Energy!) The product is called Kitec, and it brings an alarming issue.



Commercial Services

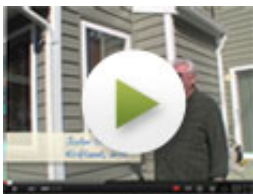
Google Reviews

A Google User



I have had a LOT of trouble with summer heat - suffering greatly - this summer was a breeze with my new windows I had the fan on only two days and then on low. I cannot believe how MUCH heat these windows kept out. I have only had the windows thru one summer but I would stand on a pedestal in the middle of the town square and shout my feelings about these windows...

[Click to Read More](#)



See what customers are saying!



Service

Kitec consists of flexible aluminum pipe sandwiched between an inner and outer layer of plastic pipe (polyethylene or PEX pipe). Kitec pipe generally comes in two colors: orange (for hot water use) and blue (for cold water use). Kitec pipes were manufactured by IPEX USA LLC and have been used in homes across many western states, i.e., Arizona, New Mexico, Texas, Nevada, California and Washington.

The main issue has been the specific brass fittings used as connectors with this pipe, and their impact on the whole hydronic system. Kitec pipe and fittings fail due to a chemical reaction known as dezincification, which results in reduced water flow and leaks. The fittings have a high concentration of lead in the brass formulation. This reacts with water over time. Dezincification occurs and a powdery white corrosion builds up in the fitting, restricting the water flow. Next comes the failure, either at the site of the connectors, or at another point in the line impacted by the restricted flow, increased pressure, or both. In both tests and in real homes, the compromised pipes and fittings have frequently caused damage from bursting and/or leaking. As these pipes are run through the walls, damage can be especially severe and unnoticed until it's too late. If this was the kind of disaster that manifested in 30 or 40 years within a home, it would not generate these lawsuits. This plumbing can fail very quickly.

Large scale failures of Kitec piping prompted the filing of thousands of defective plumbing lawsuits, including many in Canada and a class action lawsuit initiated in Nevada in 2006 that settled for \$90 million. Several lawsuits have now been filed in Washington State. There is plenty of Kitec information online including Plumbing Inspectors Journal.

View the [Kitec class action lawsuit](#).

Based on the research, it is recommended that the only reliable way to repair and eradicate the risk inherent with the defective Kitec plumbing system is to re-pipe the lines in the house. This is an extensive re-piping in your house but can save you in the long run.

We want to support homeowners to avoid a Kitec disaster. Washington Energy is now offering excellent pricing on Kitec replacement and group pricing discounts for condos, townhome complexes or homeowner associations. Our licensed and bonded plumbers are experienced in this specific issue.

Here are some photos of the Kitec replacement work done at the Home of Maria Cole, Issaquah Highlands.

Area Map

Guardian Maintenance
Program

Senior Discount
Program

Military Discount
Program

Online Store

Great Financing
Options Available



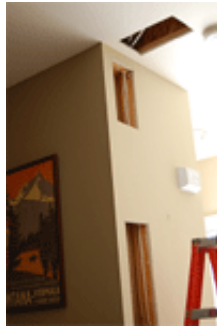
Washington Energy Plumbers prepared the house to keep it clean.



Kitec piping is visible in garage but actually runs through the entire house since it is the source of hydronic heating.



Plumber removing Kitec.



Maria's walls and ceiling will require drywall repair and repainting however this is significantly less damaging than what she could face from the Kitec pipes bursting.



New piping is in, and the heating system is safely back to work.

Last updated by [Washington Energy](#).

Join our Energy-Solutions eNewsletter and learn

how to make your home energy efficient:

Please type your email here

Subscribe

Important Links

- [Sitemap](#)
- [Privacy Policy](#)
- [Terms and Conditions](#)

Social Links



Credentials



A Rated!
Click logo
above.

